

The background features a dynamic, abstract pattern of flowing, curved lines in shades of blue and purple, creating a sense of motion and depth. The lines are most prominent on the left side and curve towards the right, set against a dark blue gradient background.

# *C-CONTROL*

The visual solution for control rooms

# From maps to smart control



1940

The rise of analog instruments made it possible to monitor critical infrastructures like dams, power lines, and nuclear plants. Only government or scientific organizations had access to these rooms.



1930

Early control centers were physical and tactical: maps, markers, and real-time strategy to coordinate armies and expeditions.



1970

## Apollo 13

NASA combined video and telemetry in real time for the first time in an operational environment. "Houston, we've had a problem" became the universal symbol of crisis management from a control room.

## Today

Accessible technology, advanced visualization, AI, sensors, and real-time data now bring that same logic to any operation.

From retail to heavy industry, control rooms are no longer exclusive— they're becoming democratized.

**C-CONTROL® is the next step in this evolution— designed for today's challenges in visualization, efficiency, and decision-making.**



# Keep your operations visual and secure



SIMPLIFY THE MANAGEMENT OF MISSION-CRITICAL SYSTEMS — REMOTELY AND SAFELY.

## What you can do with C-CONTROL®

- ✓ Visualize any data source
- ✓ Organize and sequence scenes in real time
- ✓ Manage everything quickly and clearly, right from your browser
- ✓ Collaborate with your team through roles and permissions



DEMO

# Your entire data ecosystem, in a single view

With C-CONTROL®, everything you need is right in one place. Visualize, control, and take action from a single, intuitive interface.

- ✓ **Dynamic dashboards:** Power BI, Tableau, Grafana...
- ✓ **Web & enterprise apps:** CRMs, ERPs, internal systems
- ✓ **Video surveillance:** IP cameras, VMS, real-time monitoring
- ✓ **Physical connectivity:** HDMI inputs (NVR, video conferencing, computers)
- ✓ **Workstation streams:** Remote desktops, virtual sessions



DRAG, ORGANIZE, AND CONTROL EVERY  
SOURCE WITH TOTAL FREEDOM.

FROM A SINGLE BROWSER, ANYWHERE.

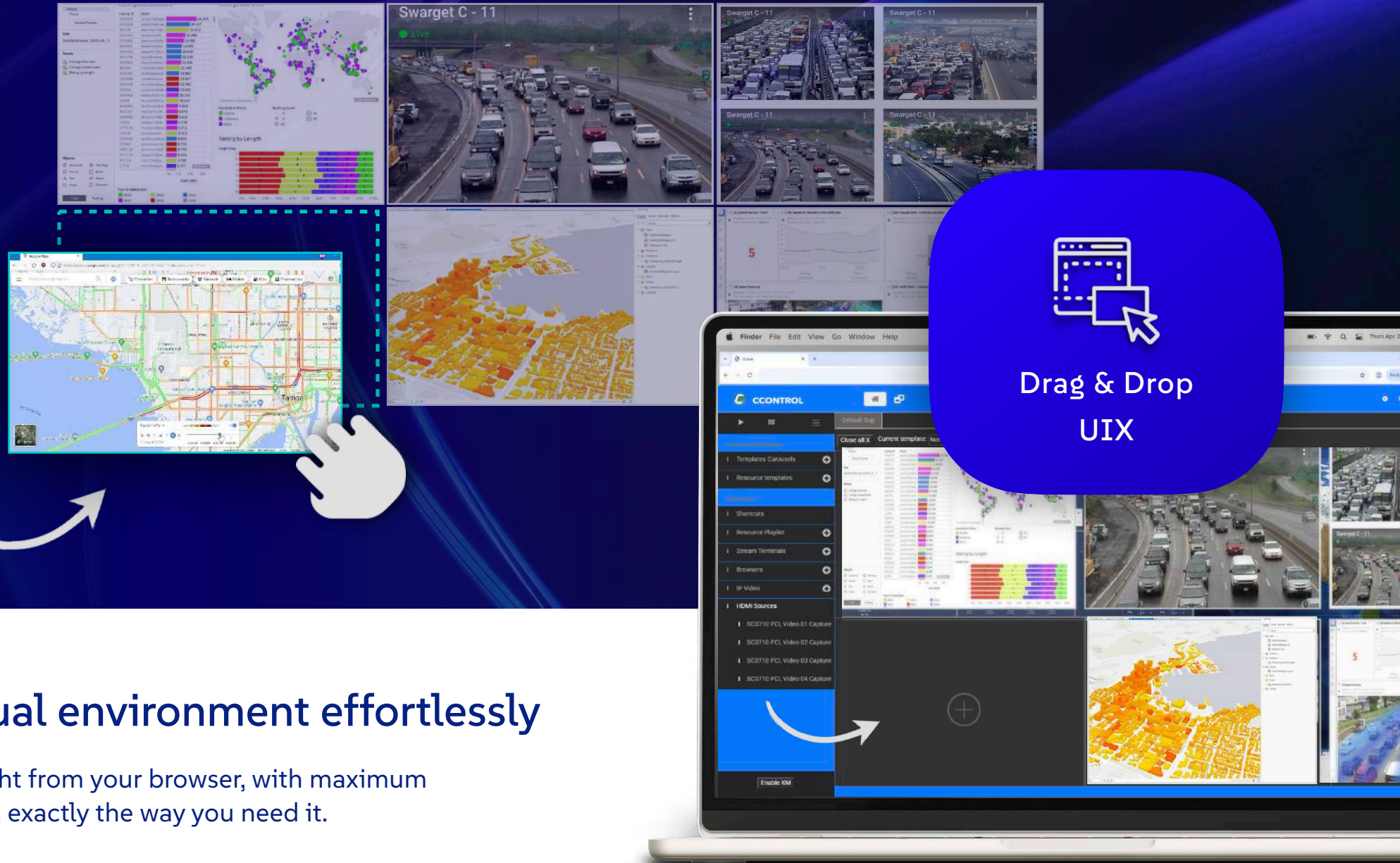
PLAYLIST

STREAMS

BROWSERS

IP VIDEO

MAP 01



## Design your visual environment effortlessly

Create dynamic scenes right from your browser, with maximum flexibility. Your workspace, exactly the way you need it.

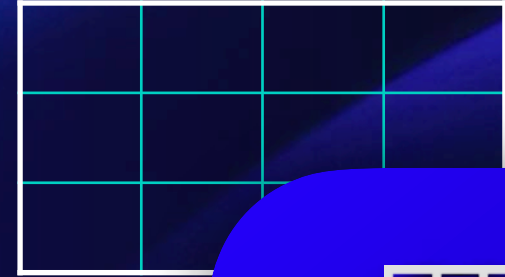
2X2



3X2



4X3



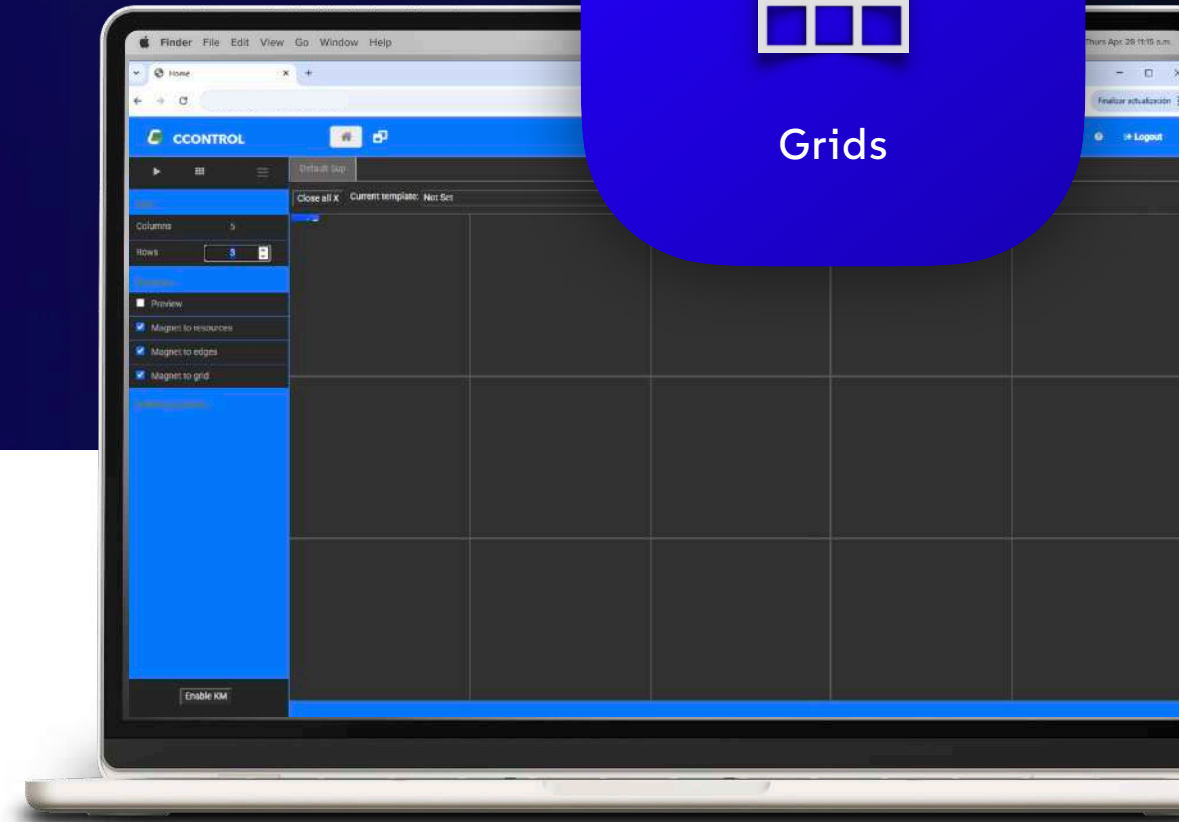
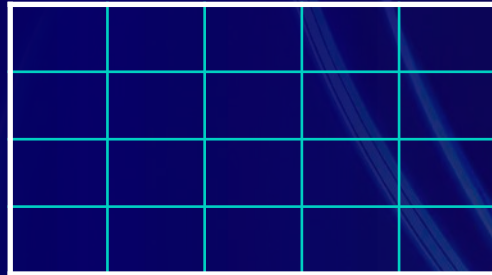
ROWS



COLUMNS



5X4



## Design your ideal operating window

Create custom visual layouts for any context.  
Every block of your video wall, tailored to fit.



  
Encoding/Decoding  
Video Streams

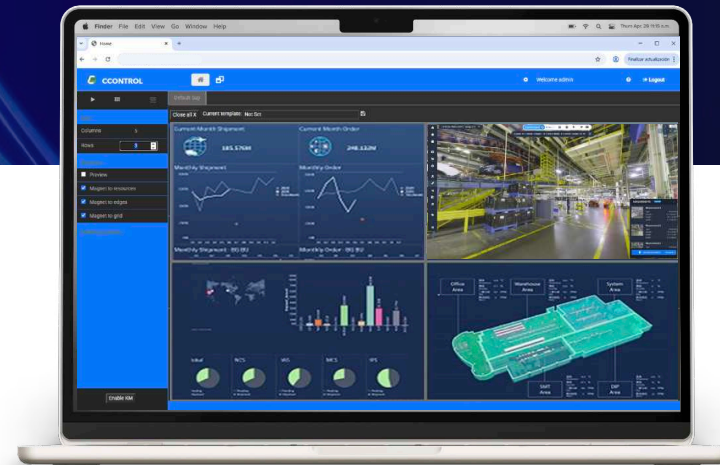
 HEADQUARTERS  
VIDEOWALL

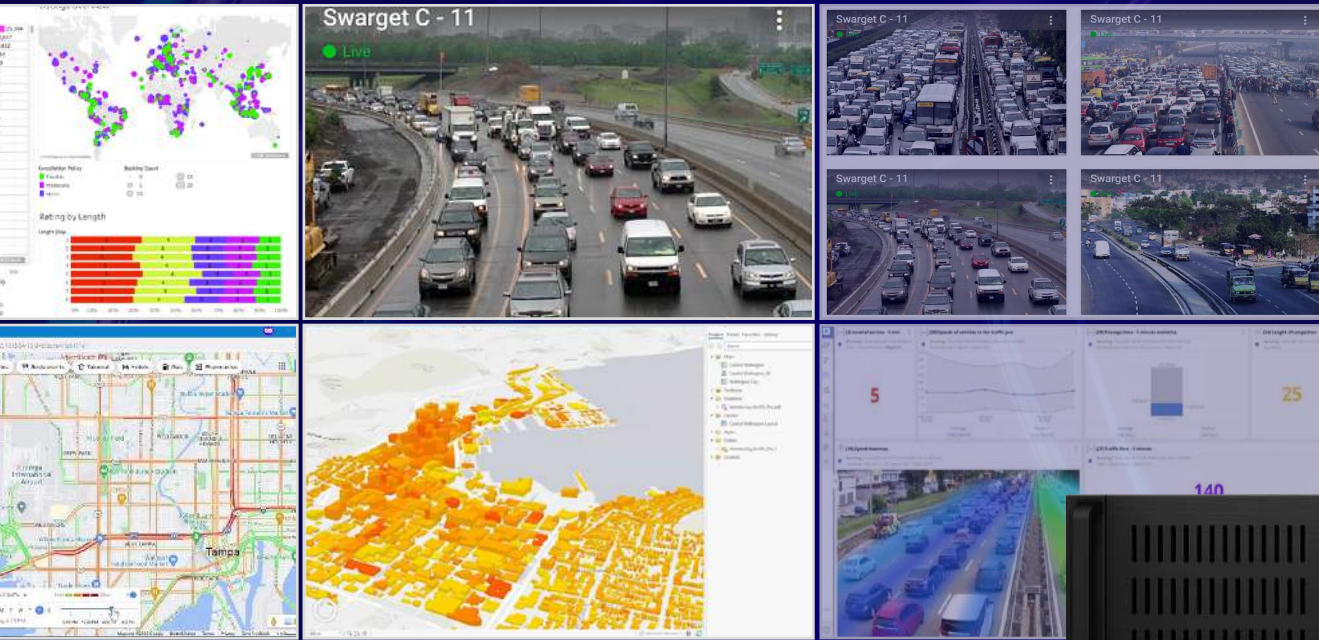


 FACTORY  
VIDEOWALL

## Share your digital environment in real time

Stream desktops, virtual sessions, or apps directly to  
different remote locations. No cables, no installation.





  
Video capture  
(HDMI)



HDMI INPUTS  
High-performance HDMI  
capture cards.



## If it happens, it's on screen

Integrate computers, cameras, NVRs, or decoders. Real-time visualization with no latency and no loss of quality.



## One space, multiple data sources in rotation

Automate the rotation of feeds in specific zones.  
Perfect for keeping visibility high without overcrowding your display.

SCENE 2

SCENE 1

SCENE 3



## One click. Full control.

Save and reuse complex configurations.  
Perfect for shift changes, drills, or critical situations.



SCENE 1



SCENE 2



SCENE 3

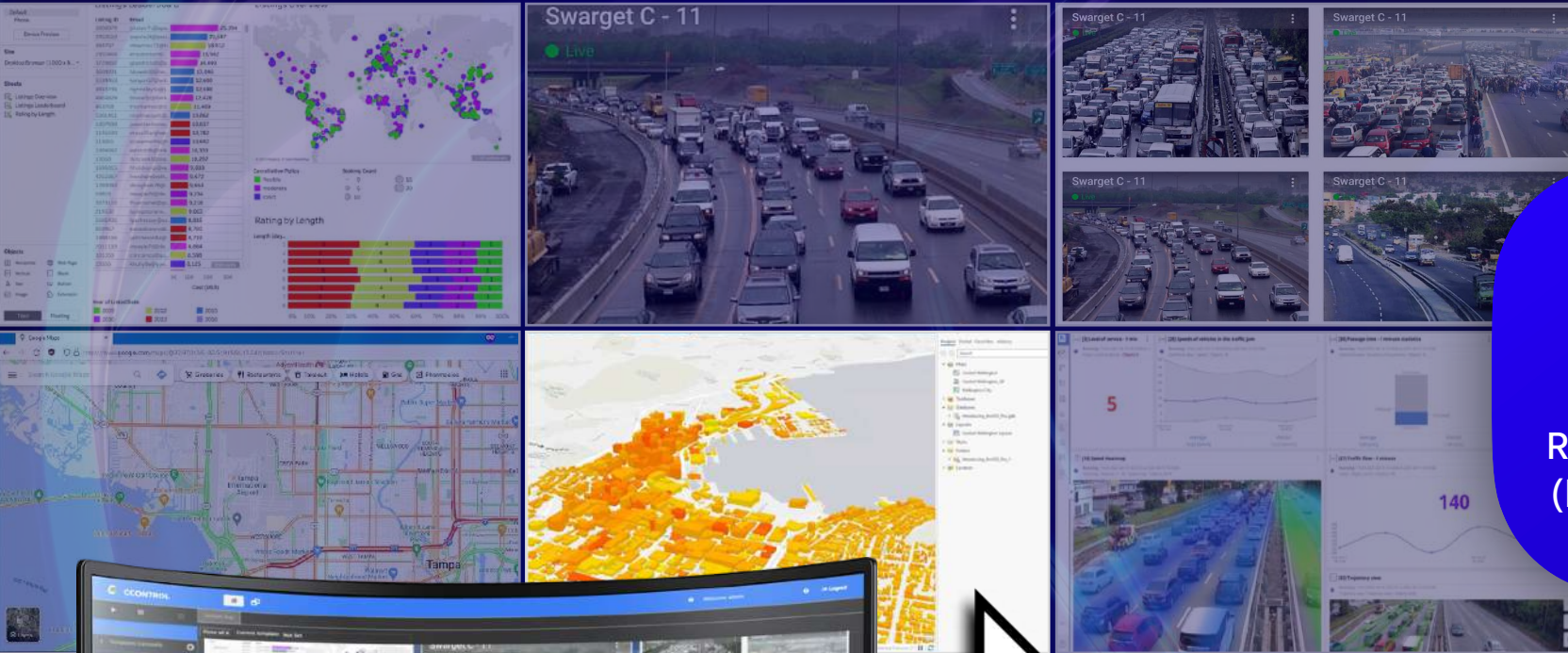




Scenario  
carousel

## Shift focus, without lifting a finger

Automatically sequence predefined scenarios.  
View different contexts with no manual intervention.

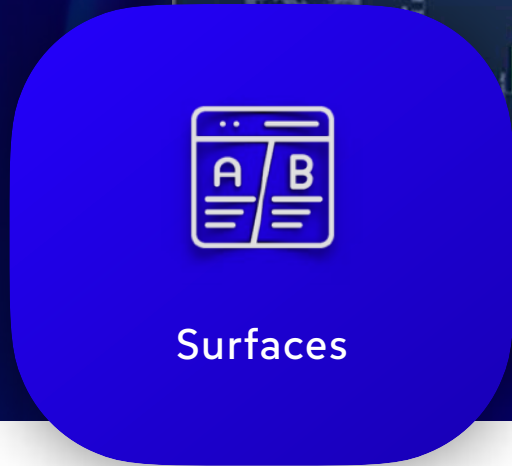


## Your browser is your control room

Interact directly with content from anywhere.  
No extra software. No complexity.

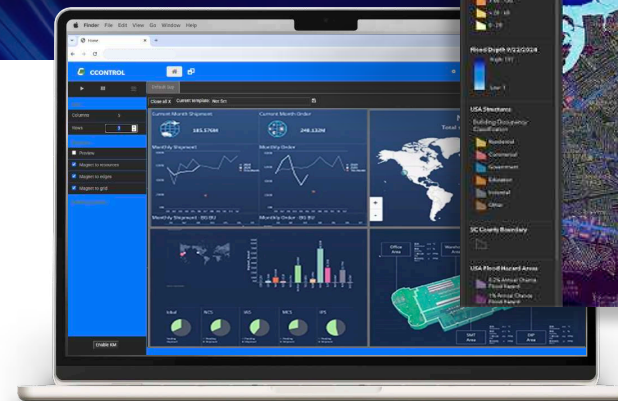
SURFACE 1

SURFACE 2



## Segment. Organize. Optimize.

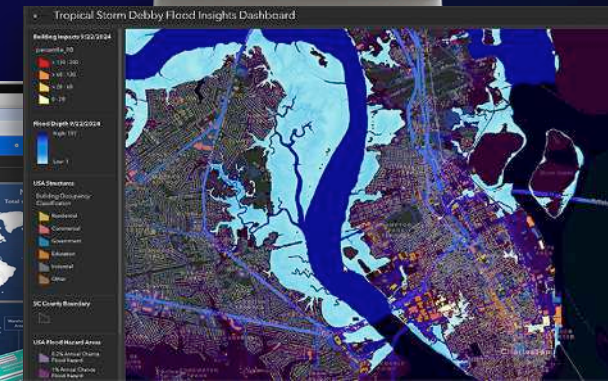
Divide your visualization environment by work areas.  
Each team sees only what it needs—right when it needs it.



SURFACE 1

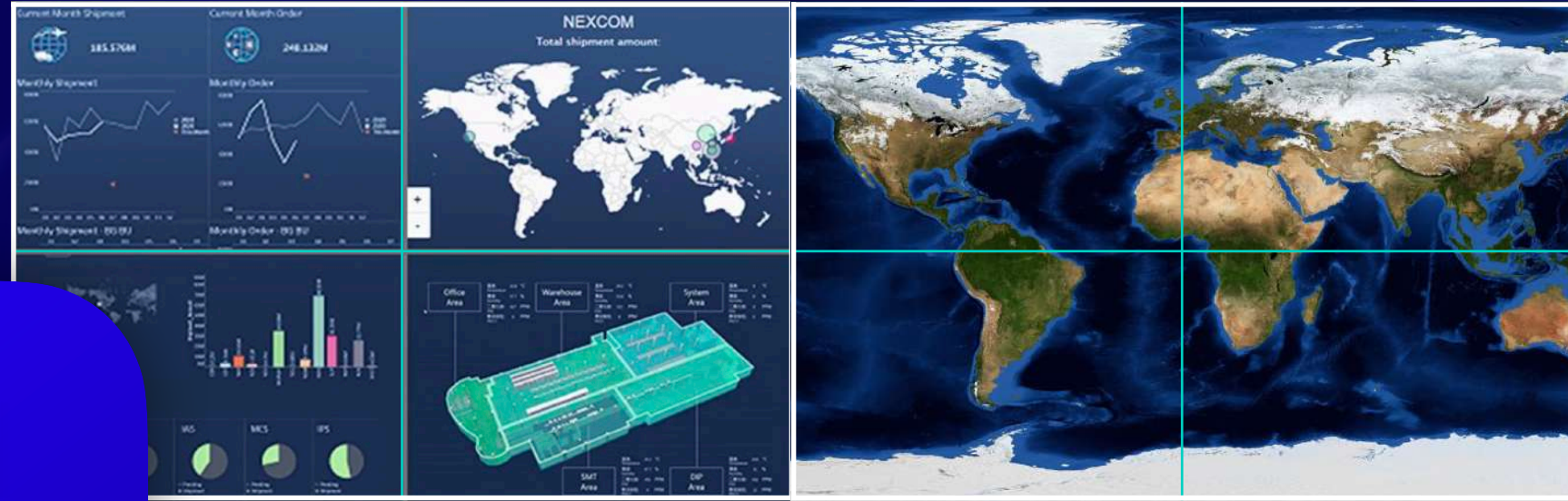


SURFACE 2



SURFACE 1

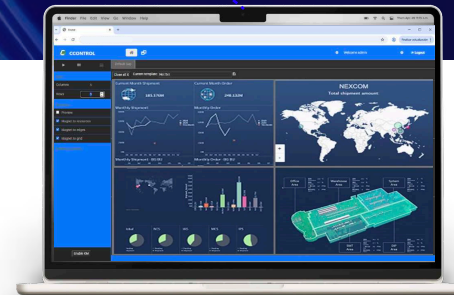
SURFACE 2



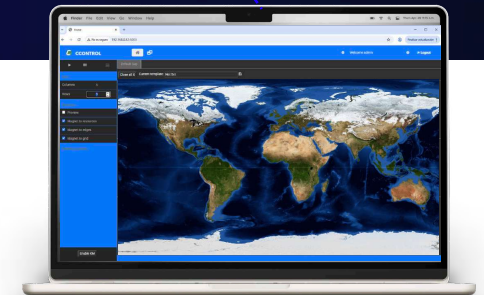
Surfaces

## Segment. Organize. Optimize.

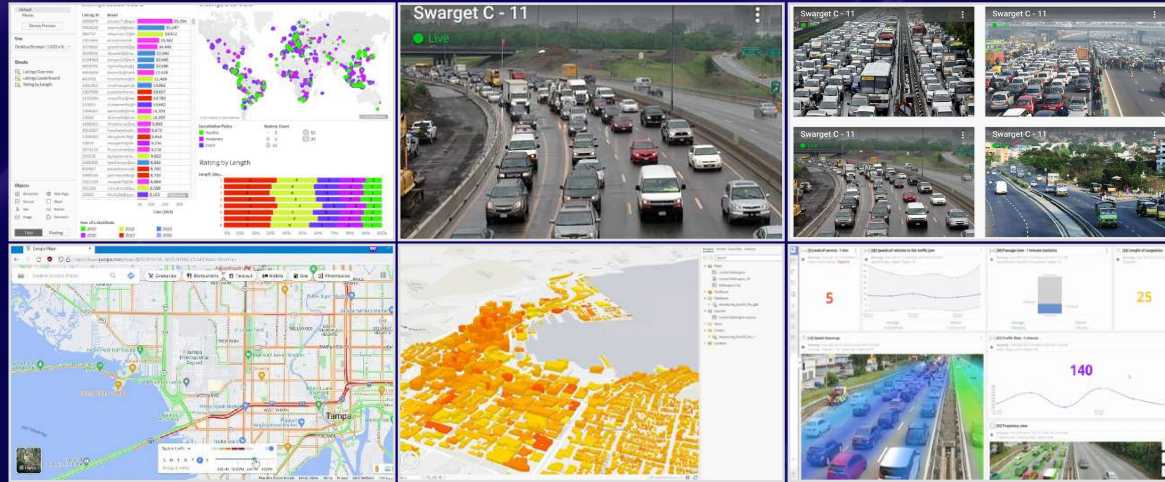
Divide your visualization environment by work areas.  
Each team sees only what it needs—right when it needs it.



SURFACE 1



SURFACE 2

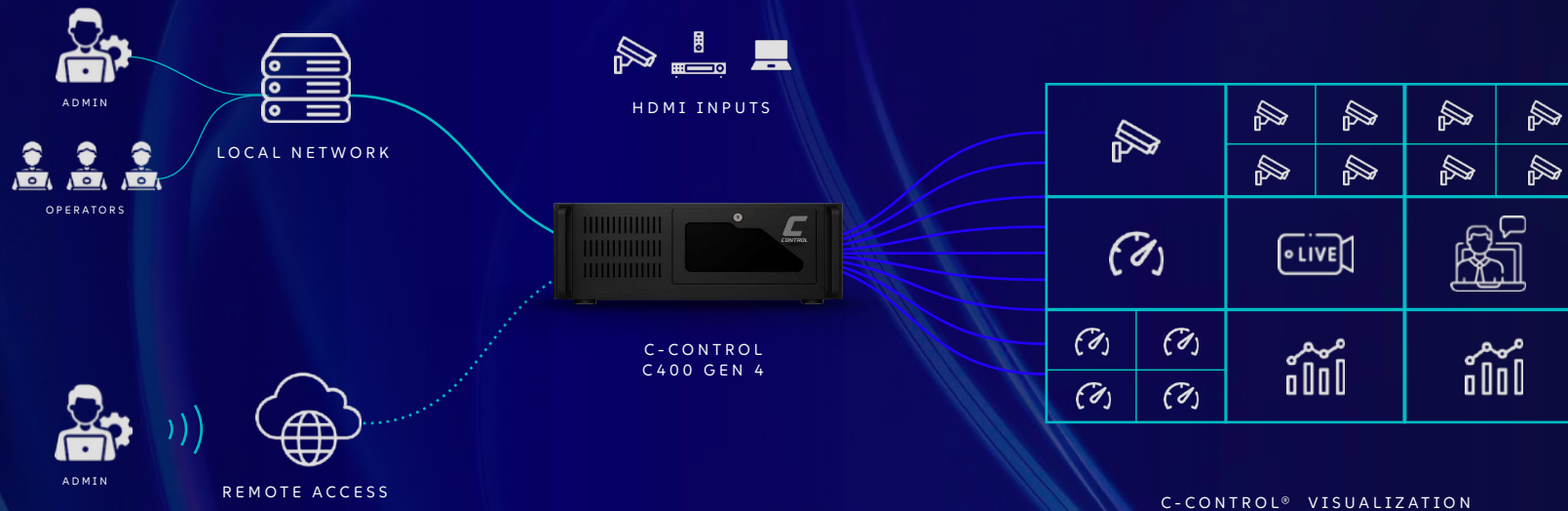


**C-CONTROL**

**Collaborate in real time,  
from anywhere**

Simultaneous visualization and control right from your browser.  
Distributed teams, centralized decisions.

# Flexible architecture, seamless operations



## C-CONTROL CONTROLLER



### C-CONTROL C400 Gen 4

- ▶ Intel i9 processor
- ▶ x4 4K Outputs
- ▶ x4 4K Inputs
- ▶ 64 GB high-performance RAM
- ▶ 1TB SSD storage
- ▶ 1 Hot Swap
- ▶ Redundant Hot Swap Power Supply
- ▶ 4U rackmount chassis with active cooling (3 fans)
- ▶ Windows 11 LTSC 2021
- ▶ Scalable system – expandable with additional drives, memory, input/output cards
- ▶ C-CONTROL license with 2 years of software maintenance (SMC)



Compatible with any type of device



Plug & Play, no complex installations



Drag & Drop interface



Remote keyboard and mouse operation



Reusable layouts and scenarios



Automatic resource and scenario carousel

## The technical heart of your control room.

DESIGNED FOR **24/7 PERFORMANCE** IN  
MISSION-CRITICAL ENVIRONMENTS.

# Seamless Visualization Without Limits

POWER, SECURITY AND CONTROL FOR MISSION-CRITICAL OPERATIONS

- ✓ Designed for demanding environments and 24/7 operations
- ✓ Software with active maintenance and redundant hardware
- ✓ Modular, scalable, and easy to integrate

All for:

# 14.649€

\*Includes **software updates** and critical security patches (2 years).

\*\*Ensures robust operation, continuous protection, and ongoing evolution.

## C-CONTROL® C400 Gen 4



- ▶ Intel i9 processor
- ▶ x4 4K Outputs
- ▶ x4 4K Inputs
- ▶ 64 GB high-performance RAM
- ▶ 1TB SSD storage
- ▶ 1 Hot Swap
- ▶ Redundant Hot Swap Power Supply
- ▶ 4U rackmount chassis with active cooling (3 fans)
- ▶ Windows 11 LTSC 2021
- ▶ Scalable system – expandable with additional drives, memory, input/output cards
- ▶ C-CONTROL license with 2 years of software maintenance (SMC)



**C-CONTROL®** centralizes the visualization of IP cameras, VMS systems, and other strategic sources, providing a robust platform for continuous monitoring and real-time decision-making.

#### BENEFITS

- ✓ Simultaneous visualization of multiple critical sources
- ✓ Native integration with market-leading VMS
- ✓ Analytics & AI support for early alerts
- ✓ Scalable platform, designed for 24/7 operations

SECURITY

# Critical Visual Operations for Sensitive Environments

**IDEAL FOR:**  
URBAN CONTROL CENTERS, PRIVATE  
SECURITY, PORT AND AIRPORT  
SURVEILLANCE



**C-CONTROL®** unifies key indicators, operational data, and audiovisual sources to enable continuous supervision of plants, warehouses, and logistics flows. Early detection and visual traceability reduce failures and optimize resources.

## BENEFITS

- ✓ End-to-end visual monitoring of KPIs and processes
- ✓ Integration with production and stock control systems
- ✓ Reduction of operational and incident response costs
- ✓ Platform built for demanding industrial environments

LOGISTICS & MANUFACTURING

# Full Process Visibility for Efficient Operations

## IDEAL FOR:

ADVANCED LOGISTICS, DISTRIBUTION CENTERS,  
MANUFACTURING, AND SMART WAREHOUSES



C-CONTROL® provides a consolidated view of key business indicators, security alerts, and service quality metrics. Its ability to visually detect incidents strengthens both decision-making and operational resilience.

## BENEFITS

- ✓ Consolidation of critical sources in a single interface
- ✓ Real-time visibility of cybersecurity alerts
- ✓ Improved operational efficiency through visual data
- ✓ Service quality monitoring from multiple perspectives

FINANCE

# Strategic Visualization for Critical Decision-Making

IDEAL FOR:

BANKING, FINTECHS, INSURANCE COMPANIES,  
AND FINANCIAL SERVICES



**C-CONTROL®** enables public administrations to manage critical operational indicators, coordinate services, and visualize multiple sources from a unified, secure, and always-available platform.

#### BENEFITS

- ✓ **Comprehensive visual management for public operations**
- ✓ **Support for remote or distributed operations**
- ✓ **Clear interface for multidisciplinary teams**
- ✓ **Redundant architecture designed for 24/7 service**

GOVERNMENT & PUBLIC SERVICES

# High-Availability Visualization for Decisions with Social Impact

#### IDEAL FOR:

WATER AND ENERGY SERVICES, MOBILITY,  
EMERGENCY RESPONSE, AND MUNICIPAL  
OPERATIONS CENTERS

# C-CONTROL

C-CONTROL® is the trusted control room solution for hundreds of leading organizations in Europe and LATAM.

YPF

Tecpetrol

ENTIDAD BINACIONAL  
YACYRETA

TGN

VEOLIA

edenor

CRUX  
MARINE

ARMAZÉM  
CLOUD

Buenos Aires  
Ciudad

Santander

PRISMA  
medios de pago

Galicia

TOYOTA

FIRST QUANTUM  
MINERALS LTD

mercado  
libre

McDonald's

SAMSUNG

Petropar

GENDARMERIA  
NACIONAL  
ARGENTINA

TERMINAL  
ZARATE  
PUERTO

NORDELTA

1816  
SEGURIDAD PRIVADA

SISIN

DJO

Tenaris

AICM

Securitas

MONTEVIDEO  
LA SERRA  
S.A.

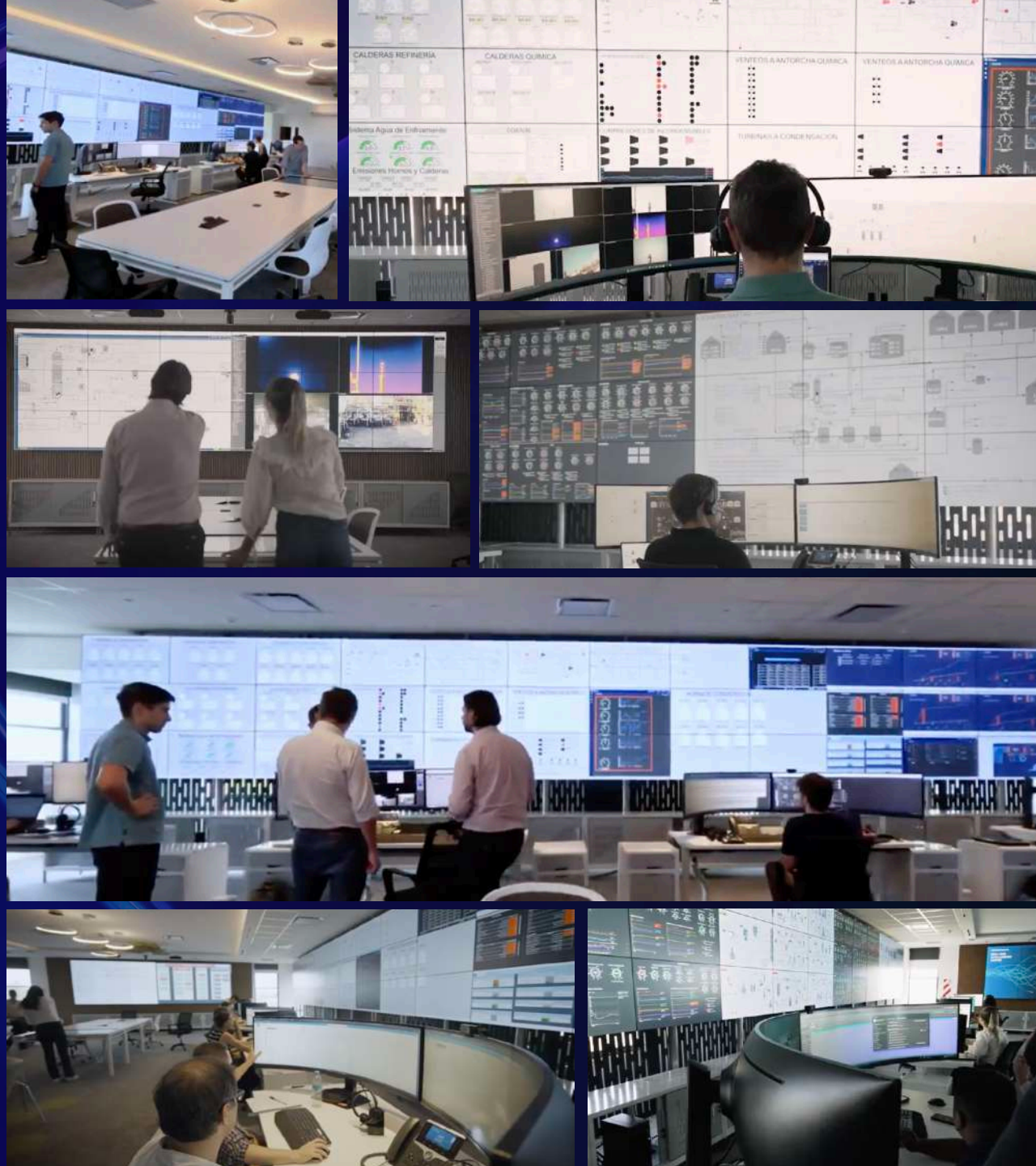


## Real-Time Operational Intelligence Center

Critical infrastructure equipped with **C-CONTROL®** to supervise, coordinate, and make strategic decisions at the La Plata Refinery.

- ✓ Unified monitoring of multiple real-time data sources
- ✓ Support for operational, environmental, and safety decision-making
- ✓ Intelligent visualization in a 24/7 industrial environment

Video





## 24/7 Strategic Control Center

Digitalization project of the operations center with **C-CONTROL®**, designed for the visual management of critical data and real-time decision-making.

- ✓ Centralized visualization of KPIs and operational alerts
- ✓ Integration with data platforms and internal systems
- ✓ High availability for continuous 24/7 operations





## Control Room for Essential Services Management

**C-CONTROL® solution** to supervise critical operations in real time across water, energy, and environmental services.

- ✓ Unified visualization of water, energy, and waste networks
- ✓ 24/7 monitoring with early alerts
- ✓ Improved operational efficiency and incident response capacity

VIDEO





**TOYOTA**

## Centralized Collaboration and Training

Multifunctional room equipped with **C-CONTROL®** to manage displays and training stations.

- ✓ Unified content management
- ✓ Optimization of meetings and training sessions
- ✓ Improved internal communication





GENDARMERIA  
NACIONAL  
ARGENTINA

## Real-Time Security Coordination

Operations center equipped with **C-CONTROL**® to integrate video and operational data.

- ✓ Immediate analysis of critical situations
- ✓ Integration of multiple sources
- ✓ Enhanced response capacity





## Strategic Control of Critical Processes

Operations center with a unified view of key data and internal systems.

- ✓ Real-time monitoring
- ✓ Greater agility and operational security
- ✓ Centralized decision-making





ENTIDAD BINACIONAL  
**YACYRETA**

## Large-Scale Energy Supervision

Control center with videowall for real-time management of operational data.

- ✓ Centralized visualization of technical systems
- ✓ Improved operational control
- ✓ Greater reliability in energy management



# SAMSUNG

## Centralized Collaboration and Training

Multifunctional room equipped with  
C-Control to manage screens and training  
stations.

- ✓ Unified content management
- ✓ Optimization of meetings and training sessions
- ✓ Improved internal communication



# C-CONTROL PRO

## IA EN TU SALA DE CONTROL

Designed to understand and act in real time

Combines **C-CONTROL® visualization with an AI** engine, enabling not only monitoring but also automatic interpretation of incoming information in real time.



### AUTOMATIC ANOMALY DETECTION IN VISUAL ENVIRONMENTS

Identifies atypical patterns (people, vehicles, unusual activity) without human intervention.



### PROACTIVE BEHAVIOR-BASED ALERTS

Generates automatic alarms when detecting risk situations, operational anomalies, or abnormal congestion.



### INTELLIGENT PRIORITIZATION OF CRITICAL EVENTS

Sorts visualizations and notifications based on urgency level or expected impact.



### OPERATIONAL EFFICIENCY ANALYSIS

Identifies bottlenecks, reaction times, and drives continuous improvement based on collected visual operation data.



### PREDICTIVE SUPERVISION

Anticipates network behaviors, people flows, or operational states before they become incidents.



### DYNAMIC CONTROL CENTER OPTIMIZATION

Automatically adjusts visualization scenes or focus areas based on the current level of criticality.

Thank you

***C-CONTROL***

[WWW.C-CONTROL.COM](http://WWW.C-CONTROL.COM)

# C-CONTROL<sup>®</sup> C400 Gen 4

Designed for **24/7 performance** in mission-critical environments.



## HARDWARE & CONNECTIVITY

### Video Input

4HDMI input, HDMI 1 & 2 Max supports 3840x2160@30FPS, HDMI 3 & 4 Max @1080P 60FPS

### Audio Input

HDMI embed audio & 2\* Analog audio Line-in

### Ethernet

1000Mbps, RJ-45

### Wifi

Optional 2.4G & 5.8G

## PERFORMANCE & SYSTEM FEATURES

### Video Encoding

**Video Format:** H.264/AVC High/Main/Baseline Profile, H.265/HEVC main profile, MJPEG/JPEG baseline

**Video Resolution:** support 2 channels 4k@30fps plus 2 channels 1080p@60fps or 4 channel 1920x1080P@60fps

**Video Bitrate:** 0.1~32Mbps

**Video FPS:** 5~60FPS

**Bitrate Control:** VBR/CBR

**Streaming Protocols:** SRT / HTTP / HLS / FLV / RTSP / RTMP(S) / UDP/RTP (Unicast/Multicast) ONVIF

### Audio Encoding

**Audio Format:** AAC/AAC+/AAC++ (MP3/MP2/AC3 G711)

**Sample Rates:** 44.1kHz/48kHz

**Bitrate:** 12~640kbps

### System

**Control Method:** Web based management - IP 192.168.1.168

**Language:** Spanish, Chinese, English control interface.

**Firmware:** Ethernet software upgrade

### Working environment

**Operating temperature:** -10 to 70 deg C

**Storage temperature:** -20 to 80 deg C

**Relative Humidity:** 5% to 90% non-condensing

### Miscellaneous

**Dimension (L x W x H):**

167\*107\*27mm

**Approx weight:** 350g

**Power adapter:** AC input 100-240V

50/60Hz DC output 12V 1A